



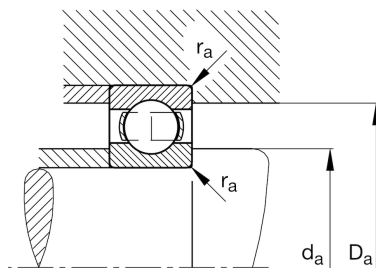
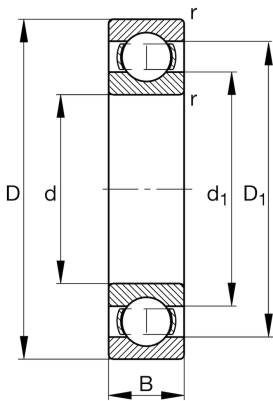
FAG

**6210**

Deep groove ball bearing

Schaeffler ID:  
0167206520000Deep groove ball bearing 62, single row,  
steel sheet metal cage

## Technical information

**Main Dimensions & Performance Data**

d	50 mm	Bore diameter
D	90 mm	Outside diameter
B	20 mm	Width
$C_r$	39,000 N	Basic dynamic load rating, radial
$C_{0r}$	24,200 N	Basic static load rating, radial
$C_{ur}$	1,460 N	Fatigue load limit, radial
$n_G$	10,500 1/min	Limiting speed
$n_{gr}$	8,200 1/min	Reference speed
	0.463 kg	Weight

**Dimensions**

$r_{min}$	1.1 mm	Minimum chamfer dimension
$D_1$	77.9 mm	Shoulder diameter outer ring
$d_1$	62 mm	Shoulder diameter inner ring

**Mounting dimensions**

$d_{a min}$	57 mm	Minimum diameter shaft shoulder
$D_{a max}$	83 mm	Maximum diameter of housing shoulder
$r_{a max}$	1.1 mm	Maximum fillet radius

**Calculation factors**

$f_0$	14.3	Calculation factor
-------	------	--------------------

**Temperature range**

$T_{min}$	-30 °C	Operating temperature min.
$T_{max}$	120 °C	Operating temperature max.